

www.gilloarchery.it



10 YEARS
ANNIVERSARY



2024/2025 CATALOG

#GilloChangingTheGame

10 YEARS ANN

Dear Friends,

The first GILLO G1 riser made by our Company was shipped to one of our distributors on July 25, 2014.

On July 25, 2024 we have therefore celebrated 10 years of continuously growing activity in the world of archery, with a record of successes and innovations that were difficult to predict at that time.

Here we are, now one of the market leaders in the development of new solutions for recurve bows and in the number of models offered to our customers, ready to open again another new era in innovation in the world of archery..



FEARS

ANNIVERSARY

And in addition to the milestones, which you already know, we have also launched other incredible products such as the GT 29" and 31" risers, the GY Bow in a box kit and many other innovations in risers, stabilizers and barebow weights, not to mention a complete line of award-winning recurve limbs.

We are proud of the work we have done in these 10 years, but obviously this is not the time to relax.

New ideas, new designs and versions of existing products, new challenges to face await us, so...

The show must go on!



Michele

Vittorio
Frangilli

Carla



G1 25" TOTAL BLACK



The legend is back !

- 25" length, RH version ONLY
- Machined from solid bar of Aluminum
- Black Matte Anodized Sandblasted body
- Special compartments for optional balancing weights
- Titanium Nitride Black Color coated Stainless Steel limbs bolts
- Black Anodized cover
- 3 front and 3 back stabs holes
- Center Stainless Steel bushing with 1 mm offset to allow better balancing by long rod
- Approx. 1350 gr total
- Packing includes long clicker plate, Manual with warranty card, GRS-03 riser protection sleeve, Gillo GHT-30-WH cap, GILLO Pin, GILLO Sunglasses and 5 Allen wrenches



58°
(medium)
ABS GRIP



GF 27" ILF COMPATIBLE

- The most advanced 27" Riser ever designed!
- Floating limbs pockets allow up to more than 40% poundage adjustment range
- Integrated shock absorbers
- 27.80" length, RH version only
- Body and Pockets machined from solid Aluminum bar
- Matte sandblasted anodized surface
- 3 x "The Tunnels" perpendicular holes for round balancing plugs
- Hard Wood, stratified G03-MG-M slim advanced grip
- 1 front stabs bushings, 1 back stabs bushing, both made by Stainless Steel Gold color Titanium Nitride coated
- 2 x special Black anodized Aluminum plugs model G24-TP-01-BK , 5/16 24 tapped, to fit the Tunnels, are included as accessories.
- Front center stabilizer bushing 1mm off from axis for perfect balance



- Approx. 1530 g mass weight
- Dual Color Versions RH:
Blue (KBL), Red *KRD),
Green (KGR)
- Total Color Version RH:
Black(KBK)

GF 25" ILF COMPATIBLE



GILLO GF RISER - BLACK POCKETS - 9 ANODIZED COLORS



The Gillo GF riser, following in the footsteps of The previous one REVOLUTION given by GT Technology (#GilloChanginGTheGame) offers further possibility to the archer. The presence of new holes perpendiculars called "The Tunnels" offers a line parallel to the thrust which helps to increase the dynamism of the bow itself. There are two "tunnels", one at each end of the riser.



24-PP-01-BK

Plastic cap, to close the tunnels on GF risers. Same as those supplied as standard with the riser.



24-TP-01-BK

Aluminum plugs threaded 5/16-24 to fit ai tunnel in the GF riser. Same as those supplied with riser GF, can be mounted on it in total 4, also providing 4 threaded holes for shock absorbers, standard weights and stabilizers. The pack of one piece includes 1 x plug, 1 x O-ring, 2 x M4 grub screws.

**POUNDAGE
ADJUSTMENT RANGE
UP TO 40% AND MORE**



"The Tunnels"

GF 25" ILF COMPATIBLE

- Floating limbs pockets allow up to more than 40% poundage adjustment range
- Integrated shock absorbers
- 25.80" length, RH and LH versions
- Body and Pockets machined from solid Aluminum bar
- Matte sandblasted anodized surface
- **"The Tunnels" perpendicular holes for round balancing plugs**
- Hard Wood, stratified G03-MG-M slim advanced grip
- 1 front stabs bushings, 1 back stabs bushing, both made by Stainless Steel Gold color Titanium Nitride coated
- 2 special Black anodized Aluminum plugs model G24-TP-01-BK , 5/16 24 tapped, to fit the Tunnels, are included as accessories.
- Front center stabilizer bushing 1mm off from axis for perfect balance
- **Approx. 1440 gr mass weight**
- Dual Color versions RH: Blue (KBL), Grey (KGY), Pink (KPK), Purple (KPR), Green (KGR), Red (KRD), Yellow (KYL), Orange (KOG), Black (OBK)



GF RISER - 3 COLORS
CERAKOTE SPECIAL EDITION



- Dual Color Cerakote Special Edition RH: Safety Orange (KSO), White (KWH), Dark Green (KDG)
- Total Color Black (K BK) version, RH and LH
- Dual Color versions LH: Grey (KGY), Red (KRD), Blue (KBL), Green (KGR)



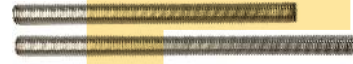
G24-BW-05-130

5/16-24 Tapped Stainless Steel 130 mm long plug to fit the Tunnels in the GF riser. With total weight of 296 g, allows to change easily the vertical balance of the bow just moving it inside each of the holes. Supplied with 4 x M4 grub screws, 4 x O-rings and one 2 mm Allen wrench.



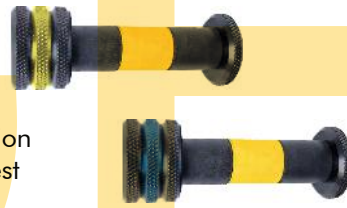
G24-TS-01-102/125

Stainless Steel 5/16-24 threaded bar, 102 or 125 mm long. Same as those provided in the G24-BW-06 kits



G24-BW-06-102-KO/KB

Self-dampened assembly composed by 1 x 102 mm Stainless Steel 5/16-24 threaded bar, 4 x GSX-CW-01 weights and 3 x G03-NS-01-25 Neoprene springs. Fits the Tunnels of the GF riser and allows the distribution of the weights in front or back of the riser to get the best possible self-dampened balance.



G24-BW-06-125-KO/KB

Self-dampened assembly composed by 1 x 125 mm Stainless Steel 5/16-24 threaded bar, 7 x GSX-CW-01 weights and 3 x G03-NS-01-25 Neoprene springs. Fits the Tunnels of the GF riser and allows the distribution of the weights in front or back of the riser to get the best possible self-dampened balance.



G24-BW-07-125-KO

Self-dampened assembly composed by 1 x 125 mm Stainless Steel 5/16-24 threaded bar, 7 x GSX-CW-02 weights and 3 x G03-NS-01-25 Neoprene springs. Fits the Tunnels of the GF riser and allows the distribution of the weights in front or back of the riser to get the best possible self-dampened balance.



GY THE UNIVER

GILLO GYB THE UNIVERSAL BOW



More than two years of development and several prototypes of risers and limbs tested already are bringing you our final solution for the beginner's bows:
THE "BOW IN THE BOX" SOLUTION

One single riser (GY-24) of one single size for any sort of beginner, based on the world proven GILLO GT technology, now pushed from its 30% adjustment limit to a new incredible >40% (+15% - 25%) limit.

One single pair of limbs with one single poundage (GYL-01-66-24) with specially designed curve to allow the full use of the range of adjustment offered by the GY 24 riser.

A special length Fast Flight string to allow the full use of the poundage range of the GY bow. Plastic rest and finger protectors provided in the box.



GILLO GY RISER (G20)

The GY bow comes with a GY 24" riser with limb bolts set to minimum load. With this setting, the bow works with a Brace Height of about 8 1/4" and is suitable as it is for beginners who have a draw length from 15" to 31".

The limbs load can be easily increased to better adapt to the needs of the user, if necessary, by operating the limbs bolts of the riser. Adding 9 turns to the limbs bolts will transform the GY into a standard ILF bow with a rated poundage of 25# @ 28" and a bow length of 65" with a Brace Height of approximately 7 1/2". With another 3 turns of the limb bolts the bow will decrease its Brace Height to 7" and will be able to reach the maximum usable poundage of 32# @ 31" of draw length.



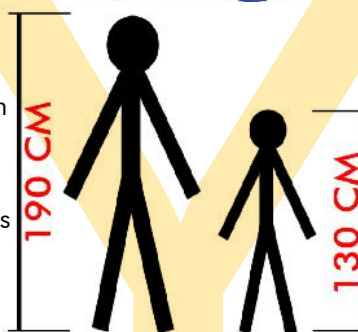
GYL LIMBS

ILF TARGET FIBER-WOOD LIMBS
Designed as a perfect match for the GILLO GY riser. They make 66" bows length on 25" riser. They make 65" bows on 24" GY risers. Compatible with all ILF risers. Fiberglass+double wood, laminate construction.

Curve designed specifically to match the range of poundage adjustment of GY 24 riser. Fits perfectly also the range for adjustment the GT, GX and GF risers. Maximum softness and performance in a range extremely large of Brace Height and Pre-Charge. Available in short length (66") and 24# as standard in GY Bow kits. 16# available as optional.

VERSAL BOW

- Recurve Bow Kit for beginners of any age, height and strength
- 65" length full Bow, RH/LH versions
- Suitable for draw lengths from 15" to 31"
- GY riser floating limbs pockets allow over 40% poundage adjustment range (+15% to -25%)
- GYL special curve limbs nominal 24#, allow adjustment from 10# to 32# depending from Draw Length
- Riser with Integrated Neoprene shock absorbers
- 12 strands, 159 cm long HPE based string with rubber fingers protectors installed on it is included
- Plastic screw-in rest is included
- Compatible to all G1, GQ, GT and GF grips
- 1 front center Stainless Steel stabilizer bushing
- 1 Round seat for additional weights
- Approx. 1100 g mass weight for riser and 375 g mass weight for limbs, total for full bow assembled approximately. 1500 g
- Dual Color versions RH/LH: Black (SBK), Blue (SBL), Red (SRD)
- Quad color versions RH: Black body with Red/Silver/Blue or Red/Silver/Green pockets



STRING WITH FINGER GUARD



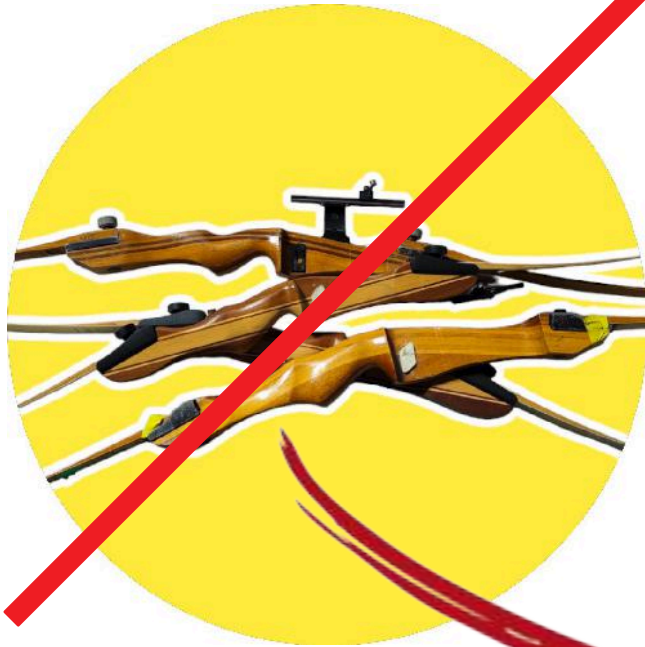
String of special length to allow full use the full poundage Range of the GY bow, with fingers protection pre-assembled



SCREW IN NYLON REST WITH LOCKING NUT



GY THE UNIV



NO MORE NEED FOR MULTIPLE BEGINNERS BOW with different lengths and poundage's!

*"One Bow to rule them all,
One Bow to bring them all,
and in the Archery bind
them"*

Well, we are so proud of this incredible innovation that Tolkien will forgive the poetic license!



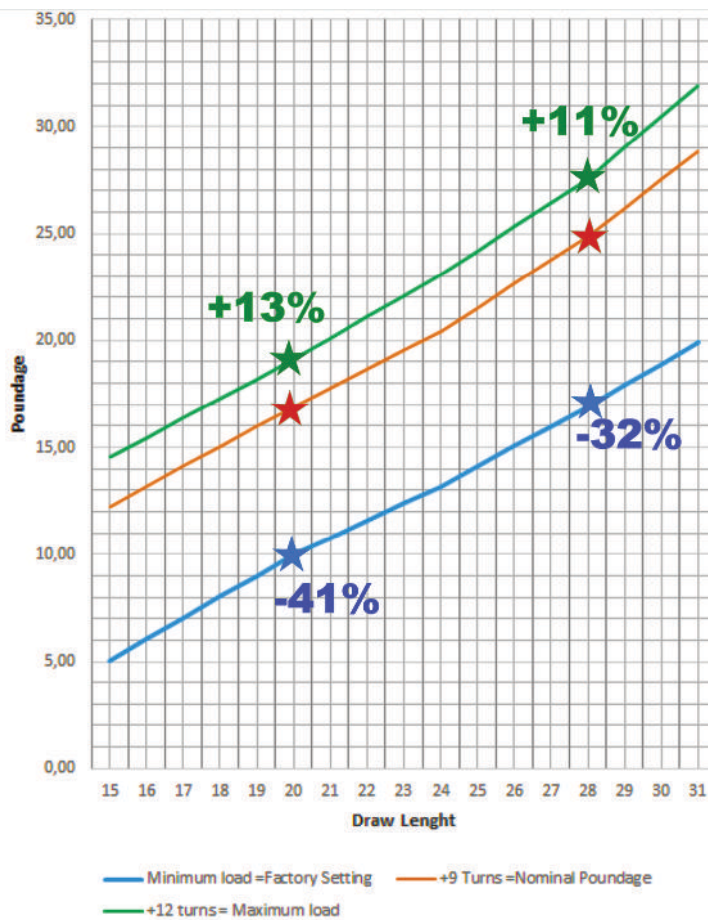
GY Bow is not a bow for
A SPECIFIC CATEGORY OR STYLE

GY Bow is not a bow for
A SPECIFIC GENRE

GY Bow is not a bow for
A SPECIFIC AGE GROUP

GY Bow is
THE ULTIMATE SOLUTION
to teach archery to people of all
ages, age, sex and body size
GY is the UNIVERSAL BOW!

UNIVERSAL BOW



THE UNIVERSAL BOW IN A GRAPH



GT 25" ILF COMPATIBLE



The introduction of the GT system allows not only to undertake a more considered archery path, thanks to the Management customizable to incredible levels of bow power, but it also allows you to customize the aesthetics of your riser over time, without necessarily having to change the riser itself. From 2021, color customization became available for pocket, already as purchasing choice, which gives the possibility of owning a unique, special and CUSTOM MADE riser.





GT L 25 ILF

The concept of riser that WETSUIT WITH THE ARCHER is what allows the GILLO riser to be the only possible choice for an ARCHER IN EVOLUTION.

GT L 25

- Floating limbs pockets allow over 30% poundage adjustment range
- Integrated shock absorbers
- 25" length, RH and LH versions
- Hard Wood, Root color medium grip
- 1 x Front center stabilizer bushing 1 mm off from axis for perfect balance
- 2 additional 5/16-24UNF stabilizers bushings on front and 2 on back for more stabilizers options.
- Approx. 1350 g total weight



**THE DETAILS
CAN MAKE
YOUR RISER
UNIQUE !**

**OPTIONS FOR
PERSONAL VERSIONS
ARE ENDLESS!**

GT L 25 ILF



GT L 25 ILF IS AVAILABLE IN
15 MATTE ANODIZED COLORS
(8 WITH BLACK POCKETS, 4 WITH GOLD POCKETS,
1 WITH BLUE POCKETS AND 2 WITH FLAG POCKETS)

GT L 25 ILF CERAKOTE IS AVAILABLE IN
4 MATTE COLORS

GT M 25 ILF IS AVAILABLE IN
4 MATTE ANODIZED COLORS

GT M 25 ILF



- Same features as GT L 25 except:
- G1 ABS Black medium grip
- 1 x Front center Stainless Steel stabilizer bushing 1 mm off from axis for perfect balance
- 2 additional 5/16-24UNF tapped holes on front and 2 on back for more stabilizers options.
- Approx. 1290 g total weight

GT 27"-29"-31" LONG RISERS

Recurve Target and Bare Bow Bows Selection by Draw Length

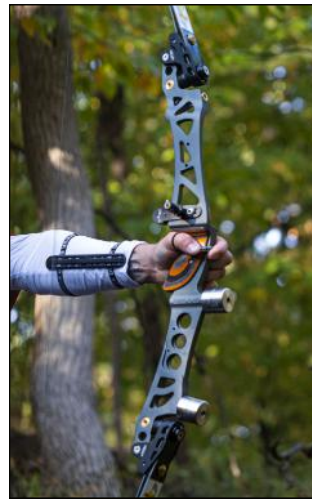
Draw Length (")	Bow	Riser	Limbs
34+	76"	31"	Long(70)
33-32	74"	31"	Medium (68)
	74"	29"	Long(70)
	72"	29"	Medium (68)
31-30	72"	29"	Medium (68)
	72"	27"	Long(70)
	70"	27"	Medium (68)
29-27	70"	25"	Long(70)
	70"	29"	Short (66)
	70"	27"	Medium (68)
	68"	27"	Short (66)
	68"	25"	Medium (68)
	68"	23"	Long(70)
26-23	67"	24"	Medium (68)
	66"	25"	Short (66)
	66"	23"	Medium (68)
	65"	24"	Short (66)
	64"	23"	Short (66)

Older suggestions
New Suggestions

GILLO risers declared long are designed for use at high draw length.

The range of long risers includes: GT 27 ILF, GT 27" Formula, GT 29" ILF and GT 31", all with Asymmetrical structure with 0.5 inch oversize on the bottom to increase stability, which can also favor the use in String Walking for Barebow.

GT 29" ILF and GT 31" ILF allow the use of weights dedicated GILLO in multiple vertical positions.



27" FORMULA



27" ILF



29" ILF



31" ILF



GT 25" FORMULA COMPATIBLE



Test different materials on the same riser is the best way to address and evaluate each change you want or you must manage.

In addition to a customization infinite between power, balance and aesthetics, it combines the possibility to transform and adapt pockets the type of limb you want use, so as not having to change risers.

GT 19"-21"-23" SHORT RISERS

- Short GILLO GT risers are designed for hunting, traditional shooting and for use with moderate draw lengths.
- 19" ILF, 21" ILF, 21" Formula and 23" Formula are made with brass alignment plates and possible use without grip with G05-WSP side wood optional plates.
- 23" ILF is ideal for target shooting with moderate draws, available in multiple matte colors (same as GT 25 Formula above).



GX^{25"} ILF COMPATIBLE

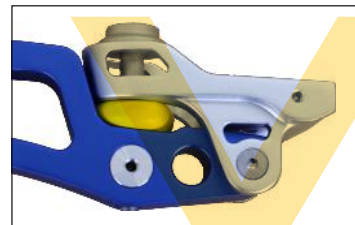


The GX range, inspired by GT range, is born from the need to allow who just approached our sport of not have to face constantly material changes and so keep spending.

The GX riser has a LIMITED WEIGHT, incredible excursion possibilities of poundage (maintains $\pm 15\%$ such as the GT riser), suitable for competitions of all levels with a modern and colorful aesthetic.



**For beginners, for those who don't want to or cannot lift excessive weights, for young people growing up...
...here is the riser created specially for them!**



GX2 25" ILF COMPATIBLE

- Born as an evolution of the GX riser
- Floating limbs pockets allow over 30% poundage adjustment range
- Limbs pockets compatible with GT limbs pockets
- Orange color integrated Neoprene shock absorbers
- 25" length, RH and LH versions
- Body and Pockets forged and/or machined from solid Aluminum bar
- Matte sandblasted bright anodized surface
- G03-YG-RH-M-OG Advanced 3D plastic slim grip
- 1 front center Stainless Steel stabilizer bushing,
- 2 Front stabilizers holes 5/16-24 tapped
- Compatible to all G1 ,GQ, GT and G5 Bare Bow weights, grips and accessories
- Approx. 1200 g mass weight



- **Dual Color versions RH:**
Black (KBK), Blue (KBL),
Purple (KPR), Green (KGR),
Red (KRD), Turquoise (KTQ)

- **Dual Color versions LH:**
Black (KBK), Blue (KBL),
Purple (KPR)

- Packing includes long clicker plate, Manual with Warranty card, 4 Allen wrenches, 5 clicker and BB weights, SS screw, 2 bolt locking Brass grub screws



GQ 25" ILF COMPATIBLE



GQ M 25 ILF

- Machined from solid Aluminum bar
- Matte sand blasted anodized surface
- Stainless Steel limbs bolts
- Plastic or 3D printed G3-YG Medium profile advanced grip
- Approx. 1280 g total weight
- **Matte single color versions RH: Blue(BL), Black(BK), Grey (GY), Purple(PR), Green (GR), Orange (OG), Red(RD)**
- **Matte single color versions LH: Blue(BL), Black(BK), Red(RD)**



GQ L 25 ILF

- Machined from solid Aluminum bar
- Bright anodized Bi-Color surface or Matte sand blasted anodized surface
- Gold color Titanium Nitride coated Steel limbs bolts
- Hard Wood stratified colors Medium advanced G3-MG grip (Dual Color versions), Wood Walnut color (Matte,one color versions) , Wood or 3D printed wood (LH version)
- Front center stabilizer bushing 1mm off from axis for perfect balance
- Approx. 1310 g total weight
- Dual Color Bright anodized versions, RH only :Turquoise(KTQ), Gold (KGO), Red (KRD), Silver (KSV)
- **Matte single color Versions RH: Blue(BL), Black(BK), Grey (GY), Purple(PR), Green (GR)**
- **Matte single color versions LH: Blue(BL), Black(BK), Purple(PR)**



GQ 23" ILF COMPATIBLE



GQ L 23 ILF

- 23" length, RH version only
- Machined from Aluminum 6061 T6
- Matte anodized colors
- Gold color Titanium Nitride coated Steel limbs bolts
- Stratified Multi Color Wood medium grip
- 3 front stabs holes
- Approx. 1140 g total weight
- **Available colors:** Blue (BL), Red (RD), Grey (GY), Black (BK), Orange (OG), Gold (GO), Green (GR)



GQ M 23 ILF

- 23" length, RH version only
- Matte anodized colors
- Stainless Steel shiny polished limbs bolts
- Plastic G03-YG advanced Grip
- 3 front stabs holes
- Approx. 1150 g total weight
- **Available colors:** Blue (BL), Red (RD), Black (BK)

GQ H 23 ILF

- 23" length, RH version only
- Brass Limbs alignment plates
- Black color Titanium Nitride coated Stainless Steel limbs bolts
- Walnut color Wood medium grip
- Black anodized Aluminum clicker plate
- 3 front stabs holes
- Approx. 1170 g total weight
- **Available colors:** Grey (GY), Black (BK), Green (GR)



GTL C88 CARBON

ILF ADVANCED TARGET LIMBS



- Perfect combination with all GILLO Gold Medal risers,
- Suitable also for all commercially available ILF mount risers
- Available in 70", 68" and 66" lengths on 25" risers
- 4 x Carbon + 3 x Foam Layers (in the picture on the left layers are specified in detail) for best speed and stability
- Increased curve for maximum speed and softness under clicker
- Glossy surface
- Design studied to make String Walking optimal
- Can be ordered in four weights: 30# - 34# - 38# - 40# - 44#

GTL Q7

ILF ADVANCED TARGET CARBON-FOAM LIMBS



- Perfect combination with all GILLO Gold Medal risers
- Suitable for all commercially available ILF mount risers
- Available in 70", 68" and 66" lengths on 25" risers
- 2 x Fiberglass + 2 x Carbon + 1 x Foam Multi-Layer structure
- Increased curve for maximum speed and softness under clicker
- Matte surface
- Design studied to make String Walking optimal
- Can be ordered in four weights: 30# - 34# - 38# - 40#

GTL Q3

ILF TARGET CARBON-FOAM LIMBS



- Perfect combination with all GILLO Gold Medal risers
- Suitable for all commercially available ILF mount risers
- Available in 70", 68" and 66" lengths on 25" risers
- 2 x Fiberglass + 2 x Carbon + 1 x foam Multi-Layer structure
- Standard curve profile
- Can be ordered in five weights: 26# - 30# - 32# - 34# - 38#

GTL C77 CARBON

ILF ADVANCED TARGET LIMBS



- Perfect combination with all GILLO Gold Medal risers,
- Suitable also for all commercially available ILF mount risers
- Available in 70", 68" and 66" lengths on 25" risers.
- 4 x Carbon and 1 x Foam - Laminated structure
- Glossy surface
- Increased curve for maximum speed and softness under clicker
- Available in 4# increments from 24# to 44# (68" and 70")
- Available in 4# increments from 24# to 40# (66")

GTL Q5

ILF ADVANCED TARGET CARBON-FOAM LIMBS



- Perfect match for GILLO risers
- Can also be used on all ILF compatible risers
- Making 70" - 68" - 66" length bows on 25" riser
- 2 x Fiberglass + 2 x Carbon + 1 x Foam Multi Layer structure
- Advanced curve for maximum speed and softness in clicker area
- Smooth aiming draw area for Bare Bow String walking use
- Glossy surface
- Available in 4 pounds increments from 24# to 40#

GYL

ILF TARGET FIBER-WOOD LIMBS



- Designed a perfect match for GILLO GY Riser
- Make 66" bows on any 25" ILF riser
- Make a 65" bow when used with GY 24" riser.
- 2 x Fiberglass + 2 x Wood laminated construction
- Advanced curve specifically designed to allow the full use of the GY risers adjustment range
- Perfectly matches also the adjustment range of GX, GT and GF risers
- Top softness in a wide range of Brace Height and pre-load level
- Available only in Short (66") size only and 24# and 16# only

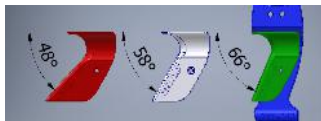
CUSTOMIZATIONS

G03-YG

- Advanced profile plastic grip series suitable for all trisiers of the GILLO range
- Thickness decreased by 2mm from the original Gillo G1 grip
- 3D printed or molded
- Assorted colors
- Available with 3 different profiles: LOW, MEDIUM, HIGH
- MEDIUM profile grip holds the optimal angle of the original G1 Medium grip



The angles:
 LOW: 66°
 MEDIUM: 58°
 HIGH: 48°



G01-LB

- Preload with locking screw
- Available in 5 different colors
- Suitable for GILLO G1, G2, GQ, Ghost risers



G03-LB

- Preload for GT/GX risers
- Available in 4 different colors



G01-AP-AL

- Alignment plate
- Aluminum 7075
- 11g



G01-AP-BR

- Alignment plate
- Brass
- 24g



G01-RG
 Root color
 MEDIUM
 (RH)



G01-WG
 Walnut color
 MEDIUM
 (RH e LH)



G01-WG
 Walnut color
 HIGH
 (RH)



G03-MG
 Multilayer wood
 LOW (RH)



G03-MG
 Multilayer wood
 MEDIUM
 (RH e LH)



G03-MG
 Multilayer wood
 HIGH (RH)



GBG-MW

Wood original
 "BALL" grip by Frangilli



GBG-YG

3D printed "BALL" grip
 by Frangilli



G01-MG

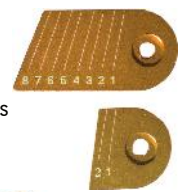
Multilayer wood grip
 MEDIUM

G02-CKK

- 3D plastic clicker plates
- Kit formed by the short and long version
- Available in various colors

G01-CKK

- Aluminum clicker plates
- Available in various colors



G01-YG

- 3D printed grip
- First version of the standard G1 grip
- Available in RH and LH versions
- Available in MEDIUM and HIGH version

THE WHEELS

With the change in World Archery regulations in the 2022 a new way of conceiving positioning of weights on the riser is born. Exceptional! Other customizations possible. How to create a special weight and that is not the simple unidirectional weight? Here are The Wheels!



GSX-WHE-KFD-GO



GSX-WHE-RB-55



GSX-WHE-RB-71



GSX-WHE-S-BR/SS/AL



THE SIDE WHEELS



To be used with GSX-CW weights

GSX-CW-01

- Disc weights for stabilizers
- 4 colors available: Gold, Black, Purple, Blue
- 34.30 mm diameter, 7.70 mm thick
- 5/16"-24 tapped hole
- 50 g weight



GSX-CW-02

- Disc weights for stabilizers
- 2 colors available: Gold, Black
- 25.00 mm diameter, 7.70 mm thick
- 5/16"-24 tapped hole
- 25 g weight
- Also available in Black Nylon version, 3.6 g only



FINAL DAMPER GILLO

GSX-FD

- Anodized aluminum in all its parts
- Adaptable to any need for softness and/or hardness thanks to the use of a special silicone ball due to its stability characteristics



WEIGHTS AND ADAPTERS

GS6-WK4

- Kit of 4 weights for all GILLO stabilizers, as well as for all the stabilizers on the market
- 1 x 1/4"-20 grub screw included
- 24K Gold Plated



GS6-WF

- Weights for all GILLO stabilizers, as well as for all stabilizers on the market
- 27 g - 1 x 1/4"-20 grub screw included
- 24K Gold Plated



GSX-UA-02

- Universal adapter
- Male 1/4"-20 male 5/16"-24
- With hexagon for 1/8" Allen wrench



GSX-UA-01

- Universal adapter for stabilizers
- Composed of female 1/4"-20 to female 5/16"-24
- 1 x 1/4"-20 and 2 x 5/16"-24 set of steel screws included
- Adds 35g and 1.5" of length to stabilizer



STABILIZERS



- 60 Ton extra stiff carbon tube with finish matt carbon, Hi-Tech
- External diameter: 13mm, for better performance in presence of wind
- Tube thickness: 3.6mm of carbon for extreme stiffness
- 5.0mm of flex @30"/1kg at tip, +-5%
- Black oxidized steel terminal screws, 1/4"-20 UNC and 5/16-24 UNF
- Central long rod available sizes: 26", 28", 30", 32"!
- Side rod available sizes: 10", 12", 15"
- Extender available sizes: 6"

GS9



- 40 Ton extra stiff carbon tube with finish matte carbon, Hi-Tech
- External diameter: 13mm, for better performance in presence of wind
- Tube thickness: 3.6mm of carbon for extreme stiffness
- 6.0mm of flex @30"/1kg at tip, +-5%
- Black oxidized steel terminal screws, 1/4"-20 UNC and 5/16-24 UNF
- Central long rod available sizes: 28", 30"
- Side rod available sizes: 10", 12", 15"
- Base rings colors combinations available: Red-Silver-Blue or Red-Silver-Green

GS13



- 40 Ton extra stiff carbon tube with finish matte carbon
- Designed for a useful use for Recurve and Compound
- External diameter: 15mm, for better performance in windy conditions
- Tube thickness: 3.5mm of carbon for extreme stiffness
- 4.2mm of flex @30"/1kg at tip, +-5%
- Black oxidized steel terminal screws, 1/4"-20 UNC and 5/16-24 UNF
- Central long rod available sizes: 26", 28", 30", 32"
- Side rod available in: 10", 12", 15"
- Extender available sizes: 5", 6"

GS8



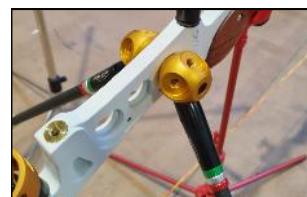
- Super stiff carbon tube
- Outer diameter: 17mm, matte surface
- Tube thickness: 1mm for high rigidity
- 8.5mm of flex @30"/1kg at tip, +-5%
- Gold anodized aluminum end caps (19mm)
- Black oxidized steel terminal screws, 1/4"-20 UNC and 5/16-24 UNF
- Central long rod available in sizes: 28", 30"
- Side rod available sizes: 10", 12"

GS7

THE "UFO" V-BAR SYSTEM

GVB-K03

- Designed for use in the round slots found in GILLO GT, GQ, GF and G2 risers
- It has 4 different angles on the horizontal plane: 90°/80°/70°/60°
- Presents infinite angles in the vertical plane
- Up to 2 UFO systems can be used on the compatible risers
- Specially created for GILLO stabilizers
- It can also be used with any other stabilizer on the market that does not exceed 19 mm in diameter at the base
- Total weight 140g



SUGGESTED STAB -COMPOUND

	GS13	GS8	GS9		
Draw Length	22"-25"	25"-27"	27"-29"	29"-31"	31"-33"
Poundage #					
20-30	28	28-30	28-30	30	30
	26	26-28	26-28-30	28-30	30
	-	28	28-30	28-30	30
30-40	28	28-30	28-30-32	30-32	30-32
	26	26-28	26-28-30	28-30-32	30-32
	-	28	28-30	28-30-32	30-32
40-50	28	28-30	28-30-32	30-32	30-32
	26	26-28	26-28-30	28-30-32	30-32
	-	28	28-30	28-30-32	30-32
50-60	28	28-30	28-30-32	30-32	30-32
	26	26-28-30	26-28-30	28-30-32	30-32
	-	28	28-30	28-30-32	30-32
60-70	28	28-30	28-30-32	28-30	30
	26	26-28-30	26-28-30	28-30-32	30-32
	-	28	28-30	28-30	30

Revision: 2024-01 - 09 July 2024

SUGGESTED STAB-RECURVE

	GS7	GS13	GS8	GS9					
Draw Length	22"-25"	25"-27"	27"-29"	29"-31"	31"-33"				
Poundage #									
14-24	28	28	28	28	28/30	28/30	28/30	28/30	30
	-	-	-	-	-	-	-	-	-
	-	-	-	-	-	-	-	-	-
24-32	28	28	28	28	28/30	28/30	28/30	28/30	30
	26	26	26	26	26/28	26/28	26/28	26/28	28
	-	-	-	-	-	-	-	-	-
32-40	28	28	28	28	28/30	-	28/30	-	30
	26	26	26	26	26/28	26/28	26/28	26/28	28
	-	-	-	-	-	-	-	-	-
40-48	28	28	28	28	28/30	-	28/30	-	30
	26	26	26	26	26/28	26/28	26/28	26/28	28
	-	-	-	-	-	-	-	-	-
48-56	28	28	28	28	28/30	-	28/30	-	30
	26	26	26	26	26/28	26/28	26/28	26/28	28
	-	-	-	-	-	-	-	-	-

Revision: 2024-01 - 09 July 2024



GILLO EXTENDERS

GSX-EX-31/41/51

- Extenders for stabilizers
- Anodized aluminum
- Available in Gold and Black color versions
- Available lengths: 3", 4", 5"

GSX-EX-2

- 2" extenders for stabilizer
- Anodized aluminum
- Available in Gold color



V-BAR SYSTEM recurve

GVB-K01

- Flat V-bar at 2 x 45°
- Anodized aluminum (two colors available: Gold and Black)
- Specifically designed for GILLO stabilizers and usable for any stabilizer on the market

GVB-K02 GVB-V22

- V-bar with 3 axis system
- Anodized aluminium, assembled with s. steel M8 screws and spring washers
- Available in two colors: Gold and Black
- Available in the version WITHOUT (GVB-V22) or in the version WITH (GVB-K02) central bolt GVB-B11



SIDE JOINT compound

GSJ-K02 GSJ-J22

- Side-Joint with 3-axis system for Compound
- Anodized aluminum assembled with s. steel M8 screws and spring washers
- Available in two colors: Gold and Black
- Available in the version WITHOUT (GSJ-J22) or in the version WITH (GSJ-K02) central bolt GVB-B11

WEIGHTS Barebow



G24-BW-08-AR-AL/BZ
Weight for GF - ARIES HEAD
Artist:
Salvatore Gagliano



G01-BW-01-WF-BZ/GO
WOLF weight
Artist:
Salvatore Gagliano



G01-BW-01-CO-AL
COBRA weight
Artist:
Salvatore Gagliano



G01-BW-01-DG
DRAGON weight
Artist:
Salvatore Gagliano



G01-BW-02-DG
DRAGON shell side plates
Artist:
Salvatore Gagliano

THE BLADE

The line of weights called BLADE was born from the idea of uniting the need to diversify the distribution of weight on the bare bow and the desire to "play". The creation of 3 separate parts that can compose, move, transform based on the needs and desires of the archer, it gives the idea of "going out from the blueprints". Inspired by just the blade of an axe, this weight can be placed in two different ways and is available in aluminum or stainless steel. Compatible with G01-BW-02 and G04-BW-04 composable weights



THE HAMMERS

The GILLO "hammers" are born from the desire to push beyond the limit to which the archer was used to. What if there was a weight that you could infinitely orient and adjust to make balance of your perfect bow? Inspired by the tool of the same name, this weight can be positioned in infinite positions and is available in aluminum or stainless steel. With the possibility of combining them.





G01-BW-01-AL
Symmetrical weight
Aluminum



G01-BW-02-SAS
Weight divided into
3 parts: central
Aluminum and s.steel sides



G01-BW-02-SSS
Weight divided by 3
s.steel parts



G04-BW-04-AAA
Weight divided by 3
aluminum parts



G04-BW-04-ASA
Weight divided into
3 parts: s.steel center
and aluminum sides



G04-BW-04-SAS
Weight divided into
3 parts: center Aluminum
and s.steel sides



G04-BW-04-SSS
Weight divided by 3
s.steel parts

Also available:

G04-BW-04-A0A

G04-BW-04-S0S

G04-BW-04-SSA

DK6

The DK6 weights are specifically 6 weights which can be placed in the special housings in the lower part of any GILLO riser.

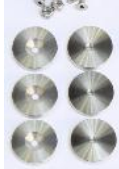
From the first riser made by GILLO Gold Medal was possible intervene on weight distribution so that it becomes one absolute customization.

It was born first for recurve bow, then for bare bow.

STEEL
6 x 25 g



STEEL
6 x 25 g



ALUMINUM
6 x 10 g



DK2

STEEL
2 x 45 g



TUNGSTEN
2 x 55 g



Here are the best known combinations (certainly not all) of weights created by the union of one or more GILLO Gold Medal elements:

G01-BW-01-AL	270 g	G01 A-BLSS-A	870 g	G04-BW-04-AAA	350 g	G04-BW-03-AL	220 g
G01-BW-02-AAA	400 g	G01 DG-S center	970 g	G04 A-BLAL-A	450 g	G04-BW-03-SS	630 g
G01-BW-02-ASA	590 g	G01-BW-02-SSS	1220 g	G04-BW-04-ASA	540 g		
G01-BW-02-AAS	710 g	G01 S-BLSS-S	1500 g	G04-BW-04-SAS	800 g		
G01 WF-A centr	840 g			G04-BW-04-SSS	990 g		

SHORT GT RISERS COMPARISON CHART

GILLO GT Short Risers comparison chart

Lenght	23"			21"			19"		
	G3L 23I RH	G3L 23I LH	G3L 23F RH	G3L 23F RH	G3L 21F LH	G3L 21I RH	G3L 19I RH	G3L 19I LH	
Model ref	G03L-RSI-23-RH	G03L-RSI-23-LH	G03L-RSF23-RH	G03L-RSF21-RH	G03L-RSF21-LH	G03L-RSI-21-RH	G03L-RSI-19-RH	G03L-RSI-19-LH	
Model Name	GT 23 ILF	GT 23 ILF	GT 23 Formula	GT 21 Formula	GT 21 Formula	GT 21 ILF	GT 19 ILF	GT 19 ILF	
Availability	Running Model	Running Model	Running Model	Running Model	Running Model	Running Model	Running Model	Running Model	
Hand	RH	RH	RH	RH	RH	RH	RH	LH	
Lenght	23"	23"	23.5"	21.5"	21.5"	21"	19"	19"	
Weight	1280	1280	1350	1290	1290	1260	1200	1200	
Riser material	Aluminium	Aluminium	Aluminium	Aluminium	Aluminium	Aluminium	Aluminium	Aluminium	
Technology	Milled	Milled	Milled	Milled	Milled	Milled	Milled	Milled	
Finishing	Sandblasted anodized	Sandblasted anodized	Sandblasted anodized	Sandblasted anodized	Sandblasted anodized	Sandblasted anodized	Sandblasted anodized	Sandblasted anodized	
Limbs Pockets	Aluminium, Black color	Aluminium, Black color	Aluminium, Black color	Aluminium, Black color	Aluminium, Black color	Aluminium, Black color	Aluminium, Black color	Aluminium, Black color	
Grip	Wood -Root finish	Wood or 3D Wood	Wood -Root finish	Wood -Root finish	Wood or 3D Wood	Wood -Root finish	Wood -Root finish	Wood or 3D Wood	
Clicker plates	Aluminium Gold color	Aluminium Gold color							
Limbs bolts	Aluminium, Black color	Aluminium, Black color	Aluminium, Black color	Aluminium, Black color	Aluminium, Black color	Aluminium, Black color	Aluminium, Black color	Aluminium, Black color	
Neopren Springs	Black	Black	Black	Black	Black	Black	Black	Black	
Align plates	Aluminium	Aluminium	Aluminium	Brass	Brass	Brass	Brass	Brass	
Weigh holes Plugs	Optional up to 2 pairs	Optional up to 2 pairs	Optional 1 pair	Optional 1 pair	Optional 1 pair	Optional 1 pair	Optional 1 pair	Optional 1 pair	
Optional weights kit	G03-DK2-TG G05-DK2 G04-BW-03	G03-DK2-TG G05-DK2 G04-BW-03	G03-DK2-TG G05-DK2 G04-BW-03	G03-DK2-TG G05-DK2 G04-BW-03	G03-DK2-TG G05-DK2 G04-BW-03	G03-DK2-TG G05-DK2 G04-BW-03	G03-DK2-TG G05-DK2 G04-BW-03	G03-DK2-TG G05-DK2 G04-BW-03	
Optional V-Bar	GVB-03	GVB-03	GVB-03	GVB-03	GVB-03	GVB-03	GVB-03	GVB-03	
Riser sleeve	GRS-03-23	GRS-03-23	GRS-03-23	GRS-03-23	GRS-03-23	GRS-03-23	GRS-03-23	GRS-03-23	
Gold	Black/Gold								
Black	Gold / Black								
Brown				Black / Brown			Black / Brown		
Grey	Black / Grey	Black / Grey	Black / Grey	Black / Grey	Black / Grey	Black / Grey	Black / Grey	Black / Grey	
Blue	Black / Blue	Black / Blue							
Red	Black / Red	Black / Red							
Purple	Black/Purple								
Green	Black / Green		Black / M Green			Black / M Green			

Last updated: July, 03, 2024 - Information here in may vary without notice

G1 & GQ RISERS COMPARISON CHART

GILLO Standard Risers comparison chart

Lenght	25"						23"			
	G4L 25 RH	G4L 25 RH	G4L 25 LH	G14M 25 RH	G14M 25 LH	G1M 25 RH	G1M 25 LH	G4L 23 RH	G4M 23 RH	G4H 23 RH
Model ref	G04L-RS-25-RH	G04L-RS-25-RH	G04L-RS-25-LH	G14M-RS-25-RH	G14M-RS-25-LH	G01M-RS-25-RH	G01M-RS-25-LH	G04L-RS-23-RH	G04M-RS-23-RH	G04H-RS-23-RH
Model Name	GQL 25 Dual	GQL 25	GQL 25	GQM 25	GQM 25	G1M 25	G1M 25	GQL 23	GQM 24	GQ 23 Hunter
Availability	Running model	Running model	Running model	Running model	November	Running model	Running model	Running model	Running model	Running model
Hand	RH	RH	LH	RH	LH	RH	LH	RH	RH	RH
Lenght	25"	25"	25"	25"	25"	25"	25"	23"	23"	23"
Weight	1290	1290	1290	1280	1280	1360	1360	1190	1150	1190
Riser material	Aluminium	Aluminium	Aluminium	Aluminium	Aluminium	Aluminium	Aluminium	Aluminium	Aluminium	Aluminium
Technology	Milled	Milled	Milled	Milled	Milled	Milled	Milled	Milled	Milled	Milled
Finishing	Bright Sandblasted anodized	Sandblasted anodized	Sandblasted anodized	Sandblasted anodized	Sandblasted anodized	Sandblasted anodized	Sandblasted anodized	Sandblasted anodized	Sandblasted anodized	Sandblasted anodized
Grip	G03 Advanced wood	Wood	Wood or 3D Wood	Plastic, Grey color	3D Grey color	Plastic, Black color	3D Black color	Wood, multicolor	Plastic, Yellow color	Wood
Clicker plates	Aluminium Gold color	Aluminium Gold color	Aluminium Gold color	3D Gold color	3D Gold color	3D Gold color	3D Gold color	Aluminium Gold color	Aluminium Gold color	Aluminium Black color
Limbs bolts	Steel, Titanium Gold plated	Steel, Titanium Gold plated	Steel, Titanium Gold plated	Stainless Steel	Stainless Steel	Stainless Steel	Stainless Steel	Steel, Titanium Gold plated	Steel, Titanium Gold plated	Steel, Titanium Black plated
Align plates	Aluminium	Aluminium	Aluminium	Aluminium	Aluminium	Aluminium	Aluminium	Aluminium	Aluminium	Brass
Cover						Aluminium, Gold color	Aluminium, Gold color			
Weigh holes Plugs	Optional up to 3 pairs	Optional up to 3 pairs	Optional up to 3 pairs	Optional up to 3 pairs	Optional up to 3 pairs			Optional up to 2 pairs	Optional up to 2 pairs	Optional up to 2 pairs
Optional weights kit	G01-DK6 G04-DK6 G03-DK2-TG G05-DK2 G04-BW-03	G01-DK6 G04-DK6 G03-DK2-TG G05-DK2 G04-BW-03	G01-DK6 G04-DK6 G03-DK2-TG G05-DK2 G04-BW-03	G01-DK6 G04-DK6 G03-DK2-TG G05-DK2 G04-BW-03	G01-DK6 G04-DK6 G03-DK2-TG G05-DK2 G04-BW-03	G01-DK6 G03-DK2-TG	G01-DK6 G03-DK2-TG	G03-DK2-TG G05-DK2 G04-BW-03	G03-DK2-TG G05-DK2 G04-BW-03	G03-DK2-TG G05-DK2 G04-BW-03
Optional Bare Bow Covers	G01-BW-01 G01-BW-02 G04-BW-04	G01-BW-01 G01-BW-02 G04-BW-04	G01-BW-01 G01-BW-02 G04-BW-04	G01-BW-01 G01-BW-02 G04-BW-04	G01-BW-01 G01-BW-02 G04-BW-04	G01-BW-01 G01-BW-02	G01-BW-01 G01-BW-02			
Make It L Optional kit						G01-MLK	G01-MLK			
Optional V-Bar	GVB-03	GVB-03	GVB-03	GVB-03	GVB-03			GVB-03	GVB-03	GVB-03
Riser sleeve	GRS-03-27	GRS-03-27	GRS-03-27					GRS-03-23		GRS-03-23
Gold	Black / Gold							Yes		
Silver	Black / Silver									
Black		Yes	Yes	Yes	Yes	G1L Total Black		Yes	Yes	Yes
Grey		Yes		Yes		Yes		Yes		Yes
Blue		Yes	Yes	Yes	Yes		Yes	Yes	Yes	
Red	Black / Red			Yes	Yes	Yes		Yes	Yes	
Purple		Yes	Yes	Yes		Yes				
Orange				Yes		Yes				
Green		Yes		Yes				Yes		Yes
Turquoise	Black / Turquoise									

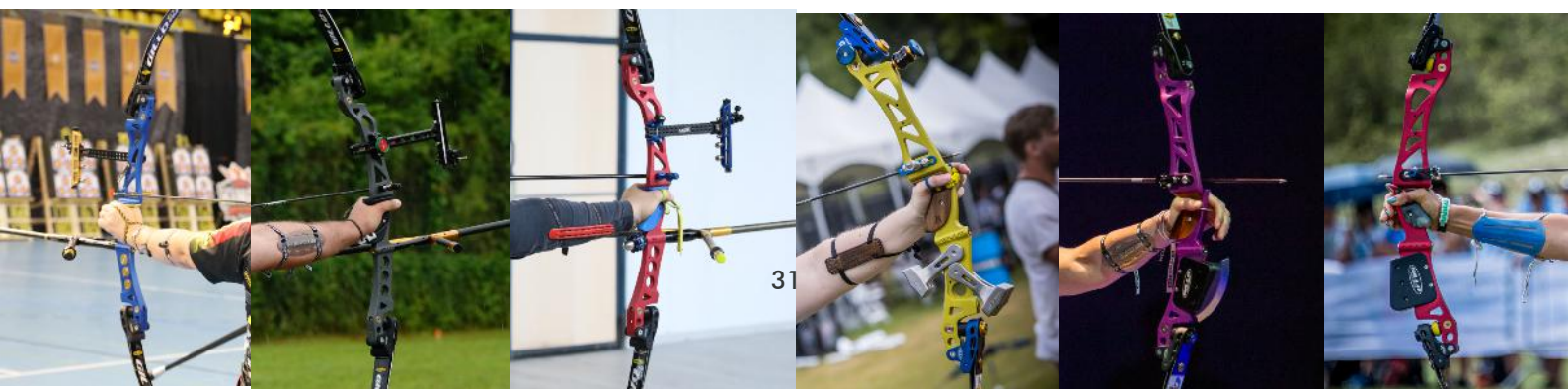
Last updated: July, 03, 2024 - Information here in may vary without notice

MEDIUM GF & GT RISERS COMPARISON CHART

GILLO GT & GF Medium Risers comparison chart

Lenght	25"							
Model	G24L 25I RH	G24L 25I LH	G3L 25I RH	G3L 25I LH	G3M 25I RH	G3L 25F RH	G3L 25F LH	
Model ref	G24L-RSI-25-RH	G24L-RSI-25-LH	G03L-RSI-25-RH	G03L-RSI-25-LH	G11M-RSI-25-RH	G3L-RSF-25-RH	G03L-RSF-25-LH	
Model Name	GF 25 ILF	GF 25 ILF	GT L 25 ILF	GT L 25 ILF	GT M 25 ILF	GT L 25 Formula	GT L 25 Formula	
Availability	Running Model	Running Model	Running Model	Running Model	Running Model	Running Model	Running Model	
Hand	RH	LH	RH	LH	RH	RH	LH	
Lenght	25.8"	25.8"	25"	25"	25"	25.5"	25.5"	
Weight	1440	1440	1350	1350	1290	1370	1370	
Riser material	Aluminium	Aluminium	Aluminium	Aluminium	Aluminium	Aluminium	Aluminium	
Technology	Milled	Milled	Milled	Milled	Milled or Forged	Milled	Milled	
Finishing	Sandblasted anodized	Cerakote®	Sandblasted anodized	Sandblasted anodized	Cerakote®	Sandblasted anodized	Sandblasted anodized	Sandblasted anodized
Limbs Pockets	Aluminium, Black (Gold) color	Aluminium, Black color	Aluminium, Black color	Aluminium, Black (Gold) color		Aluminium, Black color	Aluminium, Black color	Aluminium, Black color
Grip	G03 Advanced wood	G03 Advanced wood	G03 Advanced wood	Wood -Root finish	Wood or 3D Wood	Plastic G1	Wood -Root finish	Wood or 3D Wood
Clicker plates	Aluminium Gold color	Aluminium Gold color	Aluminium Gold color	Aluminium Gold color	Aluminium Gold color	3D Black	Aluminium Gold color	Aluminium Gold color
Limbs bolts	Aluminium, Black (Gold) color	Aluminium, Black color	Aluminium, Black color	Aluminium, Black (Gold) color	Aluminium, Black (Gold) color	Aluminium, Black color	Aluminium, Black color	Aluminium, Black color
Neopren Springs	Black	Black	Black	Black	Black	Black	Black	Black
Align plates	Aluminium	Aluminium	Aluminium	Aluminium	Aluminium	Aluminium	Aluminium	Aluminium
The Tunnels	Yes -2	Yes - 2	Yes -2					
Weigh holes Plugs	Optional up to 3 pairs	Optional up to 3 pairs	Optional up to 3 pairs	Optional up to 3 pairs	Optional up to 3 pairs	Optional up to 3 pairs	Optional up to 2 pairs	Optional up to 2 pairs
Optional Tunnels weights kits and Accessories	G24-TP-01 G24-PP-01 G24-BW-05 G24-BW-06	G24-TP-01 G24-PP-01 G24-BW-05 G24-BW-07	G24-TP-01 G24-PP-01 G24-BW-05 G24-BW-06					
Optional weights kit	G01-DK6 G03-DK2-TG G04-DK6 G05-DK2 G04-BW-03	G01-DK6 G03-DK2-TG G04-DK6 G05-DK2 G04-BW-04	G01-DK6 G03-DK2-TG G04-DK6 G05-DK2 G04-BW-03	G01-DK6 G03-DK2-TG G04-DK6 G05-DK2 G04-BW-03	G01-DK6 G03-DK2-TG G04-DK6 G05-DK2 G04-BW-03	G01-DK6 G03-DK2-TG G04-DK6 G05-DK2 G04-BW-03	G03-DK2-TG G05-DK2 G04-BW-03	G03-DK2-TG G05-DK2 G04-BW-03
Optional Bare Bow Covers	G01-BW-01 G01-BW-02 G04-BW-04	G01-BW-01 G01-BW-02 G04-BW-05	G01-BW-01 G01-BW-02 G04-BW-04	G01-BW-01 G01-BW-02 G04-BW-04	G01-BW-01 G01-BW-02 G04-BW-04	G01-BW-01 G01-BW-02 G04-BW-04	G01-BW-01 G01-BW-02 G04-BW-04	G01-BW-01 G01-BW-02 G04-BW-04
Optional V-Bar	GVB-03	GVB-04	GVB-03	GVB-03	GVB-03	GVB-03	GVB-03	GVB-03
Riser sleeve	GRS-03-27	GRS-03-28	GRS-03-27	GRS-03-27	GRS-03-27		GRS-03-27	GRS-03-27
Gold							Black/Gold	
Silver				Red+Blue / Silver Red+Green/Silver	Red+Blue / Silver Red+Green/Silver			
Black	Black / Black Gold / Black		Black / Black	Gold / Black			Gold / Black	
Grey	Black / Grey		Black / Grey	Black / Grey		Black / Grey	Black / Grey	Black / Grey
Blue	Black / Blue		Black / Blue	Black / Blue Gold / Blue		Black / Blue	Black / Blue	Black / Blue
Red	Black / Red		Black / Red	Black / Red Gold / Red		Black / Red	Black / Red	Black / Red
Pink	Black / Pink			Black / Pink				
Purple	Black/Purple			Black / Purple		Black / Purple		Black/Purple
Safety Orange		Black/Safety Orange			Black/Safety Orange			
Orange	Black / Orange							
Green	Black / Green		Black / Green	Black / Green Gold / Green		Black / Green	Black / Green	Black / Green
Dark Green		Black/Dark Green			Black/Dark Green			
Fiuo Green					Black / Fiuo Green			
Turquoise				Black / Turquoise				
Sand					Black / Sand			
White		Black / White			Gold / White			
Yellow	Black / Yellow			Black / Yellow Blue / Yellow				

Last updated: July, 03, 2024 - Information here in may vary without notice



LONG GF & GT RISERS COMPARISON CHART

GILLO GT & GF Long Risers comparison chart

Length	31"		29"		27"		
Model	G3L 31I RH	G3L 29I RH	G24L 27I RH	G3L 27I RH	G3L 27I LH	G3L 27F RH	G3L 27F LH
Model ref	G03L-RSI-31-RH	G03L-RSI-29-RH	G24L-RSI-27-RH	G03L-RSI-27-RH	G03L-RSI-27-LH	G03L-RSF-27-RH	G03L-RSF-27-LH
Model Name	GT 31 ILF	GT 29 ILF	GF 27 ILF	GT 27 ILF	GT 27 ILF	GT 27 Formula	GT 27 Formula
Availability	Running Model	Running Model	October 2024	Running Model	Running Model	Running Model	Running Model
Hand	RH	RH	RH	RH	LH	RH	RH
Length	31"	29"	27.8"	27"	27"	27.5"	27.5"
Weight	1640	1530	1530	1480	1440	1440	1440
Riser material	Aluminium 7075	Aluminium	Aluminium	Aluminium	Aluminium	Aluminium	Aluminium
Technology	Milled	Milled	Milled	Milled	Milled	Milled	Milled
Finishing	Sandblasted anodized	Sandblasted anodized	Sandblasted anodized	Sandblasted anodized	Cerakote®	Sandblasted anodized	Sandblasted anodized
Limbs Pockets	Aluminium Gold color	Aluminium, Black color	Aluminium, Black color	Aluminium, Black color	Aluminium, Black color	Aluminium, Black (Gold) color	Aluminium, Black color
Grip	Wood, multicolor	Wood, multicolor	G03 Advanced wood	Wood, multicolor	Wood or 3D Wood	Wood-Root finish	Wood or 3D Wood
Clicker plates	Aluminium Gold color	Aluminium Gold color	Aluminium Gold color	Aluminium Gold color	Aluminium Gold color	Aluminium Gold color	Aluminium Gold color
Limbs bolts	Aluminium Gold color	Aluminium, Black color	Aluminium, Black color	Aluminium, Black (Gold) color	Aluminium, Black color	Aluminium, Black (Gold) color	Aluminium, Black color
Neopren Springs	Black	Black	Black	Black	Black	Black	Black
Align plates	Aluminium	Aluminium	Aluminium	Aluminium	Aluminium	Aluminium	Aluminium
The Tunnels			Yes - 3				
Weigh holes Plugs	Optional up to 5 pairs	Optional up to 4 pairs	Optional up to 3 pairs	Optional up to 3 pairs	Optional up to 3 pairs	Optional up to 3 pairs	Optional up to 3 pairs
Optional Tunnels weights kits and Accessories			G24-TP-01 G24-PP-01 G24-BW-05 G24-BW-06				
Optional weights kit	G01-DK6 G03-DK2-TG G04-DK6 G05-DK2 G04-BW-03	G01-DK6 G03-DK2-TG G04-DK6 G05-DK2 G04-BW-03	G01-DK6 G03-DK2-TG G04-DK6 G05-DK2 G04-BW-03	G01-DK6 G03-DK2-TG G04-DK6 G05-DK2 G04-BW-03	G01-DK6 G03-DK2-TG G04-DK6 G05-DK2 G04-BW-03	G01-DK6 G03-DK2-TG G04-DK6 G05-DK2 G04-BW-03	G01-DK6 G03-DK2-TG G04-DK6 G05-DK2 G04-BW-03
Optional Bare Bow Covers	G01-BW-01 G01-BW-02 G04-BW-04	G01-BW-01 G01-BW-02 G04-BW-04	G01-BW-01 G01-BW-02 G04-BW-04	G01-BW-01 G01-BW-02 G04-BW-04	G01-BW-01 G01-BW-02 G04-BW-04	G01-BW-01 G01-BW-02 G04-BW-04	G01-BW-01 G01-BW-02 G04-BW-04
Optional V-Bar	GVB-03	GVB-03	GVB-03	GVB-03	GVB-03	GVB-03	GVB-03
Riser sleeve	GRS-03-31	GRS-03-31	GRS-03-31	GRS-03-27	GRS-03-27	GRS-03-27	GRS-03-27
Silver				Red+Blue / Silver Red+Green/Silver			
Black	Gold / Black		Black / Black	Gold / Black		Gold / Black	
Brown		Black / Brown					
Sand					Black / Sand		
Grey			Black / Grey	Black / Grey		Black / Grey	Black / Grey
Blue		Black / Blue	Black / Blue	Black / Blue		Black / Blue	Black / Blue
Red			Black / Red	Black / Red		Black / Red	Black / Red
Purple				Black / Purple		Black / Purple	Black / Purple
Orange				Black / Orange		Black / Orange	Black / Orange
Green			Black / Green	Black / Green		Black / Green	Black / Green
Turquoise						Black / Turquoise	
Yellow						Black / Yellow	

Last updated: July, 03, 2024 - Information here in may vary without notice



GX & GY MEDIUM RISERS COMPARISON CHART

GILLO GX & GX2 & GY Medium Risers comparison chart

Lenght	25"				24"	
Model	G21M 25I RH	G21M 25I LH	G12M 25I RH	G12M 25I LH	G20M 24I RH	G20M 24I LH
Model ref	G21M-RSI-25-RH	G21M-RSI-25-LH	G12M-RSI-25-RH	G12M-RSI-25-LH	G20M-RSI-24-RH	G20M-RSI-24-LH
Model Name	GX2 25	GX2 25	GX 25	GX 25	GY	GY
Availability	Running Model	Running Model	Running Model	Running Model	Running Model	Running Model
Hand	RH	LH	RH	LH	RH	LH
Lenght	25"	25"	25"	25"	24"	24"
Weight	1210	1210	1170	1170	1100	1100
Riser material	Aluminium	Aluminium	Aluminium	Aluminium	Aluminium	Aluminium
Technology	Forged/Milled	Forged/Milled	Forged/Milled	Forged/Milled	Forged/Milled	Forged/Milled
Finishing	Bright Sandblasted anodized	Bright Sandblasted anodized	Bright Sandblasted anodized	Bright Sandblasted anodized	Bright Sandblasted anodized	Bright Sandblasted anodized
Limbs Pockets	Aluminium, Black color	Aluminium, Black color	Aluminium, Silver color	Aluminium, Silver color	Aluminium, Silver color	Aluminium, Silver color
Grip	Plastic or 3D Orange Color	3D Orange Color	Plastic or 3D Yellow Color	3D Yellow Color	Plastic Yellow Color	3D Yellow Color
Clicker plates	3D Orange	3D Orange	3D Yellow	3D Yellow	3D Yellow	3D Yellow
Limbs bolts	Aluminium, Black color	Aluminium, Black color	Aluminium, Silver color	Aluminium, Silver color	Aluminium, Silver or Red color	Aluminium, Silver or Red color
Neopren Springs	Yellow	Yellow	Yellow	Yellow	Yellow	Yellow
Align plates	Aluminium	Aluminium	Aluminium	Aluminium		
Weigh holes Plugs	Optional up to 3 pairs	Optional up to 3 pairs	Optional up to 3 pairs	Optional up to 3 pairs	Optional up to 1 pair	Optional up to 1 pair
Optional weights kit	G01-DK6 G03-DK2-TG G04-DK6 G05-DK2 G04-BW-03	G01-DK6 G03-DK2-TG G04-DK6 G05-DK2 G04-BW-03	G01-DK6 G03-DK2-TG G04-DK6 G05-DK2 G04-BW-03	G01-DK6 G03-DK2-TG G04-DK6 G05-DK2 G04-BW-03	G03-DK2-TG G05-DK2 (both need longer screw)	G03-DK2-TG G05-DK2 (both need longer screw)
Optional Bare Bow Covers	G01-BW-01 G01-BW-02 G04-BW-04	G01-BW-01 G01-BW-02 G04-BW-04	G01-BW-01 G01-BW-02 G04-BW-04	G01-BW-01 G01-BW-02 G04-BW-04		
Optional V-Bar	GVB-03	GVB-03	GVB-03	GVB-03	GVB-03 (need longer screw)	GVB-03 (need longer screw)
Gold			Silver/Gold			
Black	Black/ Black	Black/ Black	Silver/ Black		Silver / Black Red+Blue / Black Red+Green/Black	Silver/ Black
Blue	Black / Blue	Silver / Blue	Silver / Blue	Silver / Blue	Silver / Blue	Silver / Blue
Red	Black / Red		Silver / Red	Silver / Red	Silver / Red	Silver / Red
Purple	Black/Purple	Black/Purple				
Green	Black / Green		Silver / Green			
Turquoise	Black / Turquoise					

Last updated: July, 03, 2024 - Information here in may vary without notice

ACCESSORIES



GQV-06

- Three compartments for arrows
- 4 pockets for accessories
- Adjustable belt included
- Available in version RH and LH in 5 colors (Blue, Red, Military Green, Purple and Yellow)
- Extra pocket included



GUM-07

- Folding umbrella with case
- Available in Yellow color



GPT-55

Towel with hook



GBP-01

- Backpack with 24 liter capacity
- Available in Yellow color
- Adjustable straps



GBP-18

- Shaped piggy bank of piglet
- Available only in Yellow color



GPD-01-8

- USB pendrive
- Capacity 8GB
- Containing the catalogue GILLO 2024/25



GWB-08

- Aluminum bottle
- Capacity 800 ml



GBP-03

- Bow backpack, from shoulder
- Can hold 2 complete bows



GBP-04

- Bow backpack, from shoulder
- Can hold 2 complete bows, full lengths
- Numerous pockets for accessories
- Tube for arrows included

GHT-80

Winter cap



GHT-20

Hat with visor in Black



GHT-30

Fisherman hat in Navy Blue



GHT-10

Hat with visor in Yellow



GHT-30

Fisherman hat in White



GSG-01-YL

Yellow sunglasses



- GGL-UF-12** Ultra Fletch CA glue
- GGL-FF-20** Faster-Fletch Accelerator
- GGL-DB-10** Un-Fletch solvent to remove the CA glues
- GLU-LI-10** Lithium grease for lubrication
- GLO-PR-34-1** Thread Locker - Low Strengh



- BINOCULAR
GOP-142**
- Binocular 10x42
 - Short focus
 - Weight 585 g
 - Waterproof, Fog proof



- SPOTTING SCOPE
GOP-336**
- 12 - 36 x 60 spotting scope
 - Small size
 - Weight 520g only
 - Rain proof, with protective rubber
 - Small tripod included

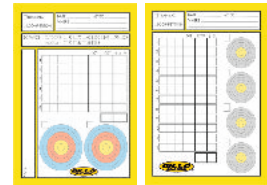


- GPS-18**
- Dragon jersey
 - Technical fabric



SCORE BOOK

- Scorebook
- Reversible Target/Field
- A6 format



- GPS-17**
- Gillo Gold Medal Polo shirt
 - Cotton - Black color



- GWJ-19**
- Waterproof jacket with hood
 - Black color



- GSW-28**
- Sweatshirt with zip and hood
 - Black color

#GilloChanginGTheGame



All news:
facebook.com/gillogoldmedal



Register to **Gillo Gold Medal Users**
Group to get support from
the Community



Is a Registered Brand of
API - Archery Productions Italy Srl
Via Varese 76/E
21013 Gallarate VA
ITALY

Ph: +39 0331-1527056
E-mail: info@gilloarchery.it

Your Dealer:



www.gilloarchery.it



Proud Associate of World Archery

Features of the products herein may vary without notice

Graphic Design by CFD di Carla Frangilli 08.2024